



## SWAMI HELPFUL HINTS

### Charging Your Swami

For optimal charging, IZZO recommends that you charge your Swami directly through your computer using the provided USB cable.

**PLEASE NOTE:** When charging through your computer, first make sure your Swami is turned **OFF** then make sure Swami Map Manager is running before you plug it in. Also, make sure that your computer is **NOT** set on **Sleep** or **Hibernate** mode (your SWAMI will not charge in these modes).

When the battery icon (upper right corner) stops blinking, your Swami is fully charged. It takes approximately 2–4 hours to fully charge your Swami.

### Unlocking Your Swami

Like many of today's electronic products, Swami may lock or freeze up. To unlock your Swami simply press the Up Arrow, Down Arrow and FCB buttons all at **the same time**.



### Common Error Messages

*Below are some common error messages that may show up on your Swami:*

**E1**—Current hole green is greater than 999 yards away. (may also show up when battery is running low)

**E2**—No course within Swami range. (make sure the course(s) you want to play show up in the lower left box in Swami Map manager)

**E3**—No courses loaded on Swami.

### Searching for Courses in Map Manager

For best results while looking for courses in Swami Map Manager, fill in the state then type in the first few letters of the course name you are interested in.

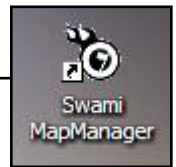
For any issues or questions you may have please contact Swami Customer Support at (800) 284-1220

## SELECTING & DOWNLOADING COURSES

Search & Select the courses that you want on SWAMI. SWAMI can hold up to 10 courses.

**For all following sessions with SWAMI Map Manager:**

- Make sure that you are connected to the internet to select and download courses.
- Launch SWAMI Map Manager by clicking the desktop shortcut
- Plug in SWAMI and DO NOT turn SWAMI on. SWAMI Map Manager will automatically recognize your unit and will take you to your personal Map Search & Selection Page



## MAPPED COURSES ON THE DATABASE

1. You can select a course that has a green + and add it to 'My Course List'
2. The course will be placed on 'My Course List'
3. You can remove a course by clicking the red X from 'My Course List'

**Golf Course Selector**

Our database includes over 12,000 U.S. golf courses to select and download from. If you do not see the course you are searching for [click here](#) and we will get it mapped for you.\*

**My Course List**

Del Course

[ Open Slot ]

[ Open Slot ]

[ Open Slot ]

[ Open Slot ]

[ Open Slot ]

[ Open Slot ]

[ Open Slot ]

[ Open Slot ]

[ Open Slot ]

[ Open Slot ]

Load SWAMI

**Search for Courses**

Fill in one or more fields to narrow your search.

Course Name:

City: Rochester State: NY Zip:

Search for Courses

Search Results

Page:

**Add Course**

1 + Brook Lea Country Club

+ Country Club of Rochester

+ Durand Eastman Golf Club

+ Genesee Valley Golf Club (North Course)

+ Genesee Valley Golf Club (South Course)

requested Irondequoit Country Club

+ Lake Shore Country Club

+ Oak Hill Country Club (East Course)

+ Oak Hill Country Club (West Course)

**Legend**

- + Add course to your swami list.
- + Course not mapped, click to request.
- X Delete course from your list.
- \* Mapping requests will take 5

**Golf Course Selector**

Our database includes over 12,000 U.S. golf courses to select and download from. If you do not see the course you are searching for [click here](#) and we will get it mapped for you.\*

**My Course List**

Del Course

X Penfield Country Club

X Midvale Golf and Country Club

X Oak Hill Country Club (East Course)

X Oak Hill Country Club (West Course)

X Country Club of Rochester

X Locust Hill Country Club

X Monroe Golf Club

[ Open Slot ]

[ Open Slot ]

[ Open Slot ]

Load SWAMI

**Search for Courses**

Fill in one or more fields to narrow your search.

Course Name:

City: Pittsford State: NY Zip:

Search for Courses

Monroe Golf Club was added.

Search Results

**Add Course**

added Locust Hill Country Club

added Monroe Golf Club


**Legend**

- + Add course to your swami list.
- + Course not mapped, click to request.
- X Delete course from your list.
- \* Mapping requests will take 5

## LISTED COURSES THAT ARE NOT YET MAPPED: REQUESTING


- If you've selected a course that has a yellow  that will signal Izzo Golf that you have requested a course map that we do not presently have in our database.




- The course will be placed on your requested list *(located below the legend at the bottom of the page)*
- Izzo Golf will map the course within 5-10 business days.
- You will receive an email confirmation that we started the mapping process.
- You will be advised when the course has been mapped on your personal golf course selector page - Click the Green  to add it to your SWAMI unit.



## COURSES NOT LISTED: NEW COURSE REQUEST

- If you cannot find a listing of a course, click the associated link on the course selector page and fill in the required info (as indicated to the right).
- Note and confirm via E-mail that you requested it.
- Izzo Golf will make a listing for the course in our database which will then be indicated with a  next to the course name.
- You must now request that course by following the steps outlined in the section at the start of this page.



Request a Map

\*First Name:

\*Last Name:

\*Email Address:

\*Course Name:   
Full or partial

Address:   
if known

\*City:

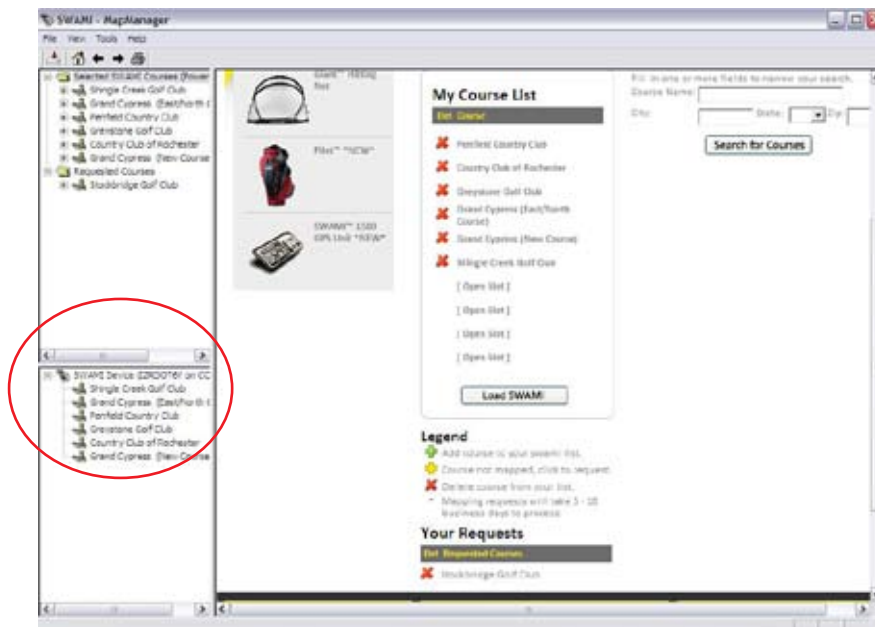
\*State:

Zip:

## LOADING SWAMI WITH SELECTED COURSES

- Once you've settled on your list of courses, press the "Load SWAMI" button.
- When your list appears in the lower left pane, you have a SWAMI with courses on it.

List Of Courses currently loaded on your SWAMI unit

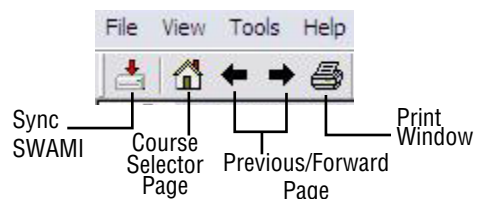


- You may add and delete from MY COURSE LIST and load SWAMI as many times as you want.
- To remove a course from the SWAMI, click on the red 'x' and click 'Load Swami' button. The course will be removed from your SWAMI unit and reflected on the bottom left panel of 'Map Manager.'
- *You are now ready to play golf the SWAMI way!*

### My Course List on the IZZO Golf Website

- You may access you personal list from the internet by going to [www.izzo.com](http://www.izzo.com) and entering your login information. Navigate to GPS -> Course Maps
- You can search and select courses to MY COURSE LIST and download them to SWAMI at a later date.

You can navigate pages you have visited within SWAMI Map Manager in the tool bar on the top left.



## PLAYING GOLF WITH SWAMI 1500

### Turning SWAMI On/Distance to Green on Hole #1

- Arrive at a golf course that you have loaded the map onto SWAMI
- Stand under an open sky (No structure overhead blocking SWAMI)
- Press the ENT button for about 4 seconds or until you see Digits on the screen. Release the button.
- SWAMI will count off time as it is acquiring satellite signals. In the event that the satellite signals were not sufficient, this step may be repeated.
- Once enough satellites are located, SWAMI knows where you are and what course you are on!
- SWAMI will automatically show you the distance in yards to the center of the green for hole #1.
- Facilities that have more than 18 holes are discussed below



*SWAMI Power-up Display*

### Using SWAMI

- Press the up/down arrows to move from hole to hole. The hole number appears on the left the screen.
- The default yardage is to the Center of the green for the hole that you have selected. By pressing the FCB button, you can see the distance to the Front and Back as well. (Note the Front, Center & Back Icons are on the right of the screen).

### Turning SWAMI Off

- Press and Hold the ENT button for about 5 seconds or until you see three dashes appear on the screen.

### Facilities with More Than One Course

*(All courses must be loaded onto SWAMI)*

- Wait to turn SWAMI on until you are at the First Tee of the course that you are playing
- SWAMI will choose the yardage to the first green of the course that it thinks you are on.
- If that yardage is not correct:
- Press the ENT button once and the Course # will be highlighted on the left of the Screen
- Press the UP/DOWN arrows until you see the correct yardage for that first hole
- You have found the right course
- Press the ENT button once and SWAMI will have switched to the course you are playing
- Continue to use SWAMI in the normal fashion



*SWAMI Power-down Display*